

A REGULAR MEETING

Of The

TRAVERSE CITY LIGHT AND POWER BOARD

Will Be Held On

TUESDAY, April 26, 2016

At

5:15 p.m.

In The

COMMISSION CHAMBERS
(2nd floor, Governmental Center)
400 Boardman Avenue

Traverse City Light and Power will provide necessary reasonable auxiliary aids and services, such as signers for the hearing impaired and audio tapes of printed materials being considered at the meeting, to individuals with disabilities at the meeting/hearing upon notice to Traverse City Light and Power. Individuals with disabilities requiring auxiliary aids or services should contact the Light and Power Department by writing or calling the following.

Jennifer J. St. Amour
Administrative Assistant
1131 Hastings Street
Traverse City, MI 49686
(231) 922-4940 ext. 201

Traverse City Light and Power
1131 Hastings Street
Traverse City, MI 49686
(231) 922-4940

Posting Date: 04-22-16
2:00 p.m.

AGENDA

Pledge of Allegiance

1. Roll Call

2. Consent Calendar

The purpose of the consent calendar is to expedite business by grouping non-controversial items together to be dealt with by one Board motion without discussion. Any member of the Board, staff or the public may ask that any item on the consent calendar be removed therefrom and placed elsewhere on the agenda for full discussion. Such requests will be automatically respected. If an item is not removed from the consent calendar, the action noted in parentheses on the agenda is approved by a single Board action adopting the consent calendar.

- a. Consideration of approving minutes of the Regular Meeting of April 12, 2016. (Approval recommended) (p.4)
- b. Consideration of approving Energy Technician and Key Accounts Representative Job Description. (Approval recommended) (Arends) (p.9)
- c. Consideration of authorizing revised quit claim deed to the City for surplus coal dock properties. (Approval recommended.) (Doren) (p.14)

Items Removed From Consent Calendar

- a.

3. Unfinished Business

- a. Possible reconsideration of approval and funding of the Garland Street Project lighting components. (Arends) (p.23)

4. New Business

- a. Consideration of authorizing the Executive Director to execute letter of authorization with MPPA for renewable energy. (Arends) (p.33)

5. Appointments

None.

6. Reports and Communications

- a. From Legal Counsel.
- b. From Staff.

1. Franklin Energy Presentation regarding TCL&P's Energy Efficiency Program. (Arends/Jacob Hardy)

c. From Board.

7. Public Comment

/js

**TRAVERSE CITY
LIGHT AND POWER BOARD**

Minutes of Regular Meeting
Held at 5:15 p.m., Commission Chambers, Governmental Center
Tuesday, April 12, 2016

Board Members -

Present: Pat McGuire, Jeff Palisin, Tim Werner, Jan Geht, John Taylor

Absent: Amy Shamroe, Bob Spence

Ex Officio Member -

Present: Marty Colburn, City Manager

Others: Tim Arends, W. Peter Doren, Scott Menhart, Karla Myers-Beman, Kelli Schroeder, Jennifer J. St. Amour

The meeting was called to order at 5:15 p.m. by Secretary Arends.

Secretary Tim Arends opened the floor to nominations for Chairperson of the Light and Power Board:

Palisin nominated Jan Geht, McGuire seconded.

Tim Arends closed the floor to nominations.

CARRIED unanimously. (Shamroe, Spence absent)

Tim Arends turned the meeting over to Chairman Geht.

Chairman Geht opened the floor to nominations for Vice Chairperson of the Light and Power Board:

Taylor nominated Jeff Palisin, McGuire seconded.

Chairman Geht closed the floor to nominations.

CARRIED unanimously. (Shamroe, Spence absent)

Chairman Geht recommended Tim Arends be reappointed Secretary for the Light and Power Board. Moved by Taylor, seconded by McGuire that Tim Arends be reappointed Secretary for the Light and Power Board.

CARRIED unanimously. (Shamroe, Spence absent)

Chairman Geht asked for volunteers to serve on the Human Resources Ad Hoc Committee. Pat McGuire, Jeff Palisin and John Taylor volunteered.

Moved by Taylor, seconded by Palisin, that the Board create a Human Resources Ad Hoc Committee set to expire in one year.

CARRIED unanimously. (Shamroe, Spence absent)

Moved by Geht, seconded by Werner, that Pat McGuire, Jeff Palisin, John Taylor and Bob Spence as the alternate be appointed to the Human Resources Ad Hoc Committee.

CARRIED unanimously. (Shamroe, Spence absent)

Tim Arends requested item 2b be removed from the Consent Calendar to be placed on a future agenda.

Item 2 on the Agenda being Consent Calendar

Moved by McGuire, seconded by Taylor, that the following actions, as recommended on the Consent Calendar portion of the Agenda, as amended, be approved:

- a. Minutes of the Regular Meeting of March 22, 2016.
- b. *Removed from the Consent Calendar.*
- c. Purchase order to Power Line Supply for LaFranier/Barlow Transmission Line Upgrade project.
- d. A series of Purchase orders to Thomasson Company for Wood Distribution Poles for the Pole Replacement project.

CARRIED unanimously. (Shamroe, Spence absent)

Items Removed from the Consent Calendar

None.

Item 3 on the Agenda being Unfinished Business

With the consensus of the Board, Chairman Geht announced the Reserved Public Comment from Ann Rogers would be allowed during the public comment for item 3a.

- a. Customer Generation – solar rate discussion.

The following individuals addressed the Board:

Tim Arends, Executive Director
Karla Myers-Beman, Controller

Moved by McGuire, seconded by Palisin, that the Board authorizes staff to amend the Net Metering Policy by removing the rate class restrictions.

The following individuals from the Public addressed the Board:

1. Reserved

Ann Rogers, 1236 Peninsula Drive, ratepayer
Greg Reisig, NMEAC, non-ratepayer

2. General

Dr. Lisa Delbuono, 1800 Nelson Rd., non-ratepayer
Dan Worth, Groundwork Center for Resilient Communities, non-ratepayer
Mary Van Valin, 871 Webster St., ratepayer
Kate Madigan, 400 Buffy St., ratepayer
Marcia Curran, 800 Cottageview Dr. #203, ratepayer
Mike Grant, 619 Webster St., ratepayer
Dave Petrov, 9988 Riley Rd., Interlochen, non-ratepayer
David Poinsett, 9770 E Harbor Hills Dr., non-ratepayer
June Thaden, 520 Highland Park Dr., ratepayer

CARRIED unanimously. (Shamroe, Spence absent)

Item 4 on the Agenda being New Business

- a. Consideration of approving a construction contract for LaFranier/Barlow Transmission Line Upgrade project.

The following individuals addressed the Board:

Tim Arends, Executive Director
Michael McGeehan, President, GRP Engineering, Inc.

Moved by McGuire, seconded by Werner, that the Light & Power Board authorizes the Chairman and the Secretary to execute a construction agreement in the amount of \$798,909.00 with CC Power, LLC for the LaFranier/Barlow Transmission Line Upgrade Project; subject to approval as to substance by the Executive Director and as to form by General Counsel; and further authorizes the Executive Director to approve change orders in the best interests of the utility.

CARRIED unanimously. (Shamroe, Spence absent)

- b. Garland Street Project presentation and request for approval and funding of the lighting components.

The following individuals addressed the Board:

Tim Arends, Executive Director
Marty Colburn, City Manager
Karla Myers-Beman, Controller
W. Peter Doren, General Counsel
Tim Lodge, City Engineer
Rob Bacigalupi, DDA Director

Moved by McGuire, seconded by Palisin, that the Board authorizes an amendment to the six year capital plan to include Garland Street decorative lighting in the amount of \$169,011, more or less, for the underground costs of the system, as requested by the City Manager.

The following individuals from the Public addressed the Board:

Marcia Curran, 800 Cottageview Drive #203, ratepayer
Mike Grant, 619 Webster, ratepayer
Rick Buckhalter, 932 Kelley St., ratepayer

Roll Call:

Yes- McGuire, Palisin

No- Werner, Geht, Taylor

FAILED.

Moved by Taylor, seconded by Werner, that the Board authorizes and amendment to the six year capital plan to include Garland Street decorative lighting in the amount of 307,000, more or less, for the underground costs of the system, as requested by the City Manager.

The following individuals from the Public addressed the Board:

Tim Lodge, City Engineer

Roll Call:

Yes- Werner, Taylor

No- McGuire, Palisin, Geht

FAILED.

- c. Consideration of a request for approval and financial participation in the Cass Street/Lake Street Streetscape Improvements Project and the Park Street Streetscape Project lighting components.

The following individuals addressed the Board:

Tim Arends, Executive Director

Marty Colburn, City Manager

Moved by McGuire, seconded by Werner, that the Board authorizes an amendment to the six year capital plan to include Cass/Lake Streets and Park Street streetscapes projects for the underground lighting elements of those projects.

CARRIED unanimously. (Shamroe, Spence absent)

Item 5 on the Agenda being Appointments

None.

Item 6 on the Agenda being Reports and Communications

- a. From Legal Counsel.
1. W. Peter Doren reported that he asked the City attorney to initiate a utility wide city ordinance amendment to establish a retroactive period in the event of any billing disputes or billing errors.
- b. From Staff.
1. Karla Myers-Beman presented a closeout report for Southside Distribution Substation, West Side Transmission Line Upgrade and Wayne Street Distribution Line Rebuild, and Hickory Hills Distribution Underground.

The following individuals addressed the Board:

Tim Arends, Executive Director

c. From Board

1. Marty Colburn distributed a booklet from the Michigan Municipal League.
2. Chairman Geht requested clarification on the Customer Survey Review Ad Hoc Committee, expiration date of 4/26/16, verifying the staff deemed the committee dissolved.

Item 7 on the Agenda being Public Comment

a. General

No one from the public commented.

There being no objection, Chairman Geht declared the meeting adjourned at 7:45 p.m.

Tim Arends, Secretary
LIGHT AND POWER BOARD



**TRAVERSE CITY
LIGHT & POWER**

To: Light & Power Board
From: Pete Schimpke, Manager of Operations & Engineering
Date: April 19, 2016
Subject: Energy Technician & Key Accounts Representative

Attached is the position description for the new Energy Technician & Key Accounts Representative position. This is a new position reporting to the Manager of Operations & Engineering and is more technical than the Manager of Energy Services and Key Accounts that was eliminated earlier this year.

A primary goal of this position is to provide hands-on energy audit services bringing added value to key customers served by Traverse City Light & Power (TCLP). In addition, energy efficiency services supplied by Franklin Energy are expected to be significantly reduced after this position is filled and the new person fully up to speed. Such additional services provided internally by TCLP will reduce overall energy efficiency costs and bring TCLP to the next level in terms of energy efficiency customer service.

This item is appearing on the Consent Calendar as it is deemed by staff to be a non-controversial item. Approval of this item on the Consent Calendar means you agree with staff's recommendation.

If any member of the Board or the public wishes to discuss this matter, other than clarifying questions, it should be placed on the "Items Removed from the Consent Calendar" portion of the agenda for full discussion. If after Board discussion you agree with staff's recommendation then the following motion would be appropriate.

MOVED BY _____, SECONDED BY _____,

**THAT THE BOARD ADOPTS THE REVISED JOB DESCRIPTION FOR THE
THE ENERGY TECHNICIAN AND KEY ACCOUNTS REPRESENTATIVE POSITION.**

TRAVERSE CITY LIGHT & POWER JOB DESCRIPTION

ENERGY TECHNICIAN & KEY ACCOUNTS REPRESENTATIVE

Supervised By: Manager of Operations & Engineering
Supervises: No supervisory responsibility
Status: Exempt

Position Summary:

Under the general direction of the Manager of Operations & Engineering, performs energy audits of commercial, industrial, and residential facilities and develops and maintains effective business relationships with current and potential major customers to meet their electrical and service needs. Responsible for developing and administering residential and commercial energy optimization programs ensuring the State requirements are met and performs other duties as assigned.

Essential Job Functions:

An employee in this position may be called upon to do any or all of the following essential functions. These examples do not include all of the duties which the employee may be expected to perform. To perform this job successfully, an individual must be able to perform each essential function satisfactorily.

1. Successfully explain the advantages of energy conservation to customers in terms of potential cost effectiveness and the difference between demand and energy and how they relate to each other.
2. Assess customer demand profiles, energy profiles, and load factor for key account customers and other large customers. Perform rate analyses to ensure they are invoiced using the proper rate schedule.
3. Conduct detailed on-site energy audits of residential, commercial, and industrial customer facilities to identify energy conservation measures and their associated savings potential. Such audits shall include but not be limited to analyzing lighting systems, motor, fans, pumps, compressed air systems, refrigeration systems, and steam systems.
4. Install temporary instrumentation inside the customer's facility as required to perform energy audits. Such instrumentation may include data loggers, intelligent electronic meters, watt meters, and volt meters.
5. Analyze the technical feasibility of energy saving measures using knowledge of engineering, energy production, energy use, construction, maintenance, system operation, and process systems.
6. Produce concise well written reports documenting audit findings and develop specific recommendations to customers for energy efficiency improvements. Incorporate into the report detailed cost analyses including consideration of the time value of money through net present value techniques.

7. Develop, maintain, and update databases and spreadsheets for tracking various Energy Optimization programs and customer usage.
8. Research new energy efficiency opportunities and develops a long-term plan designed to implement programs and incentives that will manage load growth aimed at reducing on-peak demand and maximize energy efficiency outcomes for dollar amounts budgeted for the benefit of all ratepayers.
9. Assist customers with the Traverse City Light & Power (TCLP) Energy Smart application process, process appropriate customer rebates, and accurately track the program's energy savings results.
10. Administer the utility's Key Accounts program including specialized services such as infrared scanning, and serve as the customer's primary contact on matters relating to energy efficiency and conservation, rate structure, customer service and new product offerings.
11. Promote and educate customers on energy efficiency and conservation through a variety of means including radio or television interviews, presenting to community groups, printed media campaigns, and utilizing the customer bill insert.
12. Responsible for representing the utility on energy efficiency and key account relationship matters to various entities, committees, civic groups, and at special events. Attends meetings, prepares related correspondence, and presents as necessary.
13. Ensure that the residential and business energy optimization programs are implemented successfully within the annual board approved budget.
14. Ensure TCL&P is meeting the State mandated energy optimization goals.
15. Responsible for filing annual reports to the State for the utility's Energy Optimization Program and Renewable Energy Plan.
16. Respond to customer inquiries, investigate complaints and work with other employees to resolve utility billing issues.
17. Supervise and monitor the activities of outside consultants contracted for specific work related projects.
18. Participate in the budget process for energy optimization programs and related services, projects and capital improvements.
19. Keep abreast of legislative or regulatory developments and other current issues through continued education and professional growth. Attend conferences, workshops, and seminars as appropriate.
20. Perform other duties as assigned.

Required Knowledge, Skills, Abilities and Minimum Qualifications:

The requirements listed below are representative of the knowledge, skills, abilities and minimum qualifications necessary to perform the essential functions of the position. Reasonable accommodations may be made to enable individuals with disabilities to perform the job.

- Two (2) year degree in Electrical Engineering Technology or four (4) year Bachelor degree in Technology System Management. Energy conservation and energy efficiency certifications such as Certified Energy Manager (CEM) or Business Energy Professional (BEP) preferred.
- Demonstrated knowledge ability to safely install and use electrical instrumentation to gather data for energy audits, including but not limited to data loggers, intelligent electronic meters, watt meters, and volt meters.
- Proven analytical and problem solving skills.
- Valid State of Michigan Vehicle Operator's License.
- Thorough knowledge of the principles and practices of energy conservation, energy efficiency, and energy auditing.
- Thorough knowledge of the legislative and regulatory issues surrounding utilities.
- Knowledge of the technical products and equipment utilized by electric utilities and the ability to effectively explain their purpose and operation to customers.
- Considerable technical knowledge of electrical principles and theories to effectively communicate with large customers.
- Skill in researching complex issues, assembling and analyzing data, and communicating comprehensive and accurate explanations to customers.
- Ability to effectively communicate ideas and concepts orally and in writing, make presentations in public forum and maintain public relations.
- Ability to establish effective working relationships and use good judgment, initiative and resourcefulness when dealing with customers, professional contacts, and the public.
- Ability to use basic office equipment such as telephone, calculator, photocopier, fax, personal computer and applicable software applications such as word processing, spreadsheet, energy analysis software, and presentation software.
- In addition to the above requirements, all positions require the ability to read, write, and speak and understand the English language as necessary for the position; the ability to follow written and oral instructions and the ability to interact positively with other employees and members of the public. Employees are also expected to possess and

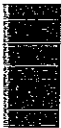
maintain a record of orderly, law-abiding citizenship, sobriety, integrity and loyalty as it pertains to and reflects upon their employment. Employees must be physically and mentally able to perform the essential duties of their position without excessive absences.

Physical Demands and Work Environment:

The physical demands and work environment characteristics described here are representative of those an employee encounters while performing the essential functions of the job. Reasonable accommodations may be made to enable individuals with disabilities to perform the essential functions.

While performing the duties of this job, the employee is regularly required to communicate in person, by telephone, and by email, read regular and small print, view and produce written and electronic documents and enter data on a computer keyboard. The employee must be mobile in an office setting, stand, sit, stoop and kneel, use hands to finger, handle, or feel and reach with hands and arms. The employee must occasionally lift and/or move items of light to moderate weight.

While performing the duties of this job, the employee regularly works indoors but must drive a motor vehicle between work sites. The typical work environment of this job is a business office setting where the noise level is quiet and sometimes moderate but work inside customer facilities will at times be required. Customer work environments vary and generally are more noisy and less clean than an office environment. The employee may work near moving mechanical equipment and have the potential threat of electric shock.



**TRAVERSE CITY
LIGHT & POWER**

Investing Our Energy In You

For the Meeting of April 26, 2016

To: Light & Power Board
From: W. Peter Doren, General Counsel
Date: April 21, 2016
Subject: Coal Dock

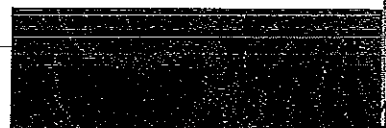
The City and Rotary are scheduled to close on the transfer of the Coal Dock properties May 2, 2016. As a part of Rotary's inspections, they conducted an ALTA Survey which disclosed a small gap of not more than 5.09 feet between the edge of the M-22 right-of-way and Parcel 3. Attached is a communication from Rotary's attorney, Robert Parker, requesting a revision in the legal description together with the ALTA Survey. The Detail of the Survey shows the gap.

If the Board agrees with the request from Rotary, they should approve the Executive Director's execution of the attached Quit Claim Deed to the City of Traverse City. The only change is at the end of Parcel 3 to cover this gap.

The original Quit Claim Deed and other conveyance documents were authorized by the Board on April 8, 2014, conditioned on the City's concurrence that this was surplus property. Also attached is a copy of the email communication from the City Clerk's office containing the motion of the City Commission that was approved on November 2, 2015, certifying the property as surplus and authorizing the conveyance to Rotary. The following motion would authorize the revised Quit Claim Deed:

That the Executive Director be authorized to execute the revised Quit Claim Deed to the City of Traverse City with modified legal description for Parcel 3 as submitted by General Counsel.

W. Peter Doren
General Counsel



QUIT CLAIM DEED

The Grantor, **Traverse City Light and Power Department**, a Michigan municipal electric utility, of 1131 Hastings Street, Traverse City, MI 49686, hereby conveys and quit claims to the Grantee, the **City of Traverse City**, a Michigan municipal corporation, of 400 Boardman Avenue, Traverse City, MI 49684, the following described premises situated in the Township of Elmwood, County of Leelanau, State of Michigan, to-wit:

Parcel 1 That part of Sec. 33, T 28 N, R 11 W, described as follows: Commencing at the N $\frac{1}{4}$ post of said Sec. 33; th. E along the N Sec. line of Sec. 33, 1443.10 ft.; th. S 4°-24' E 1173.37 ft.; th. S 89°-41' E, 73.64 ft. to the POB; th. S 89°-50' E, 120.17 ft.; th. S 88°-59' E, 413.13 ft.; th. S 1°-14' W, 233.35 ft.; th. N 89°-28' W, 204.53 ft.; th. N 6°-16' W, 179.94 ft.; th. N 51°-22' W, 31.12 ft.; th. N 88°-22' W, 108 ft.; th. S 58°-21' W 36.48 ft.; th. S 3°-50' W 27 ft.; th. S 75°-24' W, 127.73 ft.; th. N 85°-48' W 19.3 ft.; th. N 2°-10' E 100 ft. to the POB, together with full riparian right and also including those riparian rights owned by Franklin C. Sears which are attached and appurtenant to his ownership of the shore front property South of the above described land as described in 5 certain deeds recorded in the office of the Register of Deeds for the County of Leelanau in Liber 67D, p 14; Liber 75D, p 45; Liber 82D, p 324; Liber 96, p 41; and Liber 67, p 78, but only insofar as such riparian rights may be necessary for the use, operation, maintenance, and replacement of the dock above described, and for the enlargement of said dock by extending it in a Southerly direction not in excess of 50 feet, nor in excess of the present width of said dock on its Southerly boundary.

Parcel 2

All that part of the parcel described in L 115, p 370, of the Leelanau County Register of Deeds office, lying W of State Highway M-22 and described as a part of Gov't Lot 1 of Sec. 33, T 28 N, R 11 W, more fully described as follows: Commencing on Grand Traverse Bay 403.5 ft. S of the E and W centerline of Gov't Lot 1 of Sec. 33; th. W to a street surveyed by Tuller in 1901; th. S 200 ft.; th. E to a point 300 ft. W of the centerline of State Highway M-22; th. N 60 ft.; th. E 300 ft. to said centerline; th. N 40 ft.; th. E to the shore of Grand Traverse Bay; th. N'ly along the shore of Grand Traverse Bay 100 ft. more or less to the Place of beginning covering entire Lots 13 and 14 of an unrecorded plat and the N 40 ft. of Lot 12 of an unrecorded plat lying W of the centerline of State Highway M-22, excepting parcel conveyed to John Akers and wife as recorded in L 70, p 597; and excepting parcel conveyed to State of Michigan, State Highway Commissioner Charles Ziegler, Nov. 30, 1949, described as commencing on Grand Traverse Bay 403.5 ft. S of E and W centerline of Lot 1; Sec. 33; th. W to a street surveyed by Tuller in 1901; th. S 200 ft.; th. E to a point 300 ft. W of the centerline of State Highway M-22; th. N 60 ft.; th. E 300 ft. to said centerline; th. N 40 ft.; th. E to shore of Grand Traverse Bay; th. N'ly along shore of Grand Traverse Bay 100 ft. more or less to the Place of beginning which lies E'ly of a line 43 ft. W'ly of and measured at Right angles and parallel to the centerline of M-22.

Parcel 3

That part of Gov't. Lots 1 and 2, Sec. 33, T 28 N, R 11 W, more fully described as: Commencing at the North ¼ corner of said Sec. 33; th. East 1443.10 feet along the North line of said Sec. 33; th. South 4° 24' East, 1173.37 feet; th. South 89° 41' East, 73.64 feet; th. South 2° 10' West, 100.00 feet to the point of beginning; th. South 85° 48' East, 19.13 feet; th. North 75° 24' East, 127.73 feet; th. South 3° 50' West, 232.08 feet, along the face of a revetment for Grand Traverse Bay; th. North 89° 47' West, 134.61 feet to the Easterly right-of-way of State Highway M-22; th. North 2° 10' East, 200.37 feet, along said right-of-way to the point of beginning; together with all land between the side-lines of the above described property extended Easterly to the waters edge; including all lands lying between the western boundary of the above-described parcel and the eastern edge of the right-of-way for State Highway M-22 also known as South West Bay Shore Drive.

This conveyance is for the sum of ONE DOLLAR (\$1.00).

This property may be located within the vicinity of farmland or farm operations. Generally accepted agricultural and management practices which may generate noise, dust, odors, and other associated conditions may be used and are protected by the Michigan Right to Farm Act.

The Grantor grants to the Grantee the right to make all division(s) under Section 108 of the Land Division Act, Act No. 288 of the Public Acts of 1967.

Dated: _____, 2016

Dated: _____

Grantor:

Accepted by Grantee:

Traverse City Light and Power Department
By: Timothy Arends
Its: Executive Director

City of Traverse City
By: Martin Colburn
Its: City Manager

STATE OF MICHIGAN)
):ss.
COUNTY OF GRAND TRAVERSE)

On _____, 2016, personally appeared before me **Timothy Arends, Executive Director, Traverse City Light and Power Department**, signor of the within instrument, who duly acknowledged to me that he executed the same.

_____, Notary Public
County, Michigan

My commission expires:
Acting in the County of Grand Traverse

STATE OF MICHIGAN)
):ss.
COUNTY OF GRAND TRAVERSE)

On _____, 2016, personally appeared before me **Martin Colburn, City Manager, City of Traverse City**, signor of the within instrument, who duly acknowledged to me that he executed the same.

_____, Notary Public
County, Michigan

My commission expires:
Acting in the County of Grand Traverse

This instrument is exempt from transfer taxes pursuant to MCL 207.526(h)(i) and MCL 207.505(h)(i).

The above legal description was furnished by the Grantor, and drafter has not examined and makes no representations respecting title or description.

Prepared by and
Send Recorded Document to:

Send Subsequent Tax Bills To:

W. Peter Doren (P23637)
Sondee, Racine & Doren, PLC
310 W. Front Street, Suite 300
Traverse City, MI 49684
(231) 947-0400

Grantee

Tax Parcel #

Recording fee: \$

Transfer Tax: \$0

W. Peter Doren

From: Parker, Robert <rparker@shrr.com>
Sent: Wednesday, April 20, 2016 3:28 PM
To: W. Peter Doren
Cc: Marsha Smith (msmith@rotarycharities.org); Lauren Tribble-Laucht
Subject: coal dock parcel
Attachments: GCES201603200101 Rotary Camps ALTA Survey 2016-03-10.pdf

Pete:

Attached is the ALTA survey for the coal dock parcel. As we discussed in our phone call yesterday, the survey discloses a small gap between the western boundary of Parcel 3 and the eastern right of way M-22. At its greatest width it amounts to about 5 feet.

The City has agreed to address this issue its deed of conveyance for Parcel 3 by including the following language: *Including all lands lying between the western boundary of the above described parcel and the eastern edge of the right of way for State Highway M-22 also known as South West Bay Shore Drive.*

Although we understand that Light & Power's deed to the City has already been executed, we are asking that this language be added to the conveyance for Parcel 3. We also understand that the addition of this language may require the acquiescence of the Board.

Please let me know if you believe this presents any issues.

Thanks much.

ROBERT W. PARKER | ATTORNEY
SMITH HAUGHEY RICE & ROEGGE
Direct Phone: 231-486-4504 | E-mail: rparker@shrr.com

101 N. Park St., Ste 100 | Traverse City, MI 49684
Phone 231-929-4878 Fax 231-929-4182 | www.shrr.com



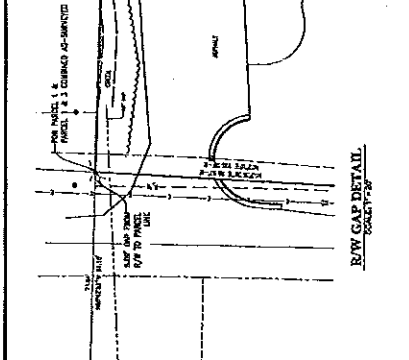
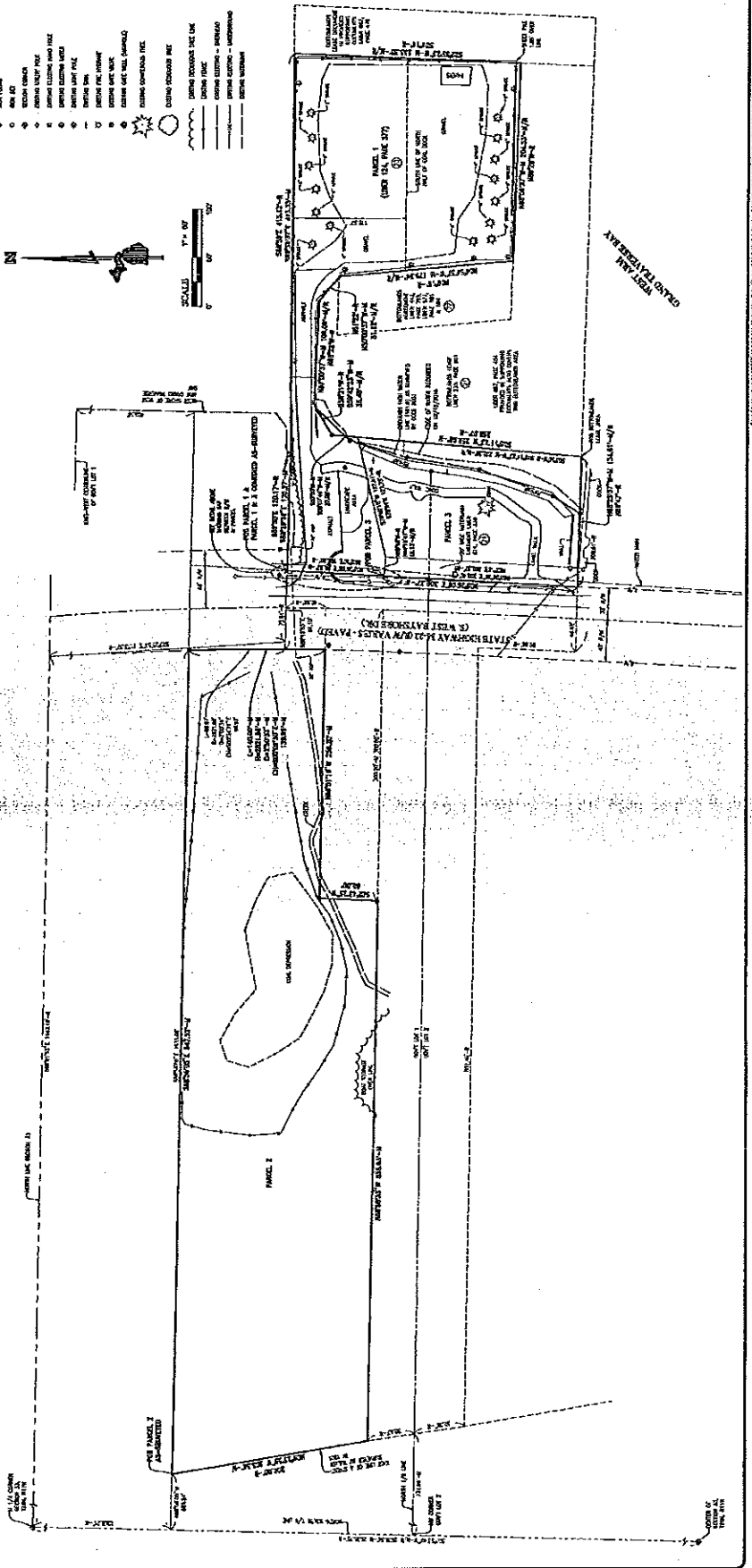
***** Smith Haughey Rice & Roegge *****

Please note that this email message and any attachments may contain privileged or confidential information that is protected against use or disclosure under federal and state law. If you have received this in error, please advise by immediate reply. Any transmission to persons other than the intended recipient shall not constitute a waiver of any applicable privileges. Any unauthorized use, disclosure, copying or dissemination is strictly prohibited.

THIS SURVEY WAS MADE FROM THE POINTS SHOWN ON THE ATTACHED PLANS AND THE FIELD NOTES. THE POINTS WERE MEASURED BY THE SURVEYOR AND THE DISTANCES WERE MEASURED BY THE SURVEYOR. THE SURVEYOR HAS NOT BEEN ADVISED OF ANY ADVERSE CLAIMS OR INTERESTS IN THE LAND SURVEYED. THE SURVEYOR HAS NOT BEEN ADVISED OF ANY ADVERSE CLAIMS OR INTERESTS IN THE LAND SURVEYED. THE SURVEYOR HAS NOT BEEN ADVISED OF ANY ADVERSE CLAIMS OR INTERESTS IN THE LAND SURVEYED.



NOTICE TO CONTRACTORS: THIS SURVEY WAS MADE FROM THE POINTS SHOWN ON THE ATTACHED PLANS AND THE FIELD NOTES. THE POINTS WERE MEASURED BY THE SURVEYOR AND THE DISTANCES WERE MEASURED BY THE SURVEYOR. THE SURVEYOR HAS NOT BEEN ADVISED OF ANY ADVERSE CLAIMS OR INTERESTS IN THE LAND SURVEYED. THE SURVEYOR HAS NOT BEEN ADVISED OF ANY ADVERSE CLAIMS OR INTERESTS IN THE LAND SURVEYED. THE SURVEYOR HAS NOT BEEN ADVISED OF ANY ADVERSE CLAIMS OR INTERESTS IN THE LAND SURVEYED.



W. Peter Doren

From: Tim Arends
Sent: Wednesday, November 04, 2015 2:22 PM
To: Katelyn Zeits; doren@sondeeracine.com
Cc: Karla Myers-Beman; Benjamin Marentette; Julie Dalton; Marty Colburn
Subject: Re: TCL&P Coal Dock Property

Pete will work with Lauren on transferring the deed to the city.

Thank you.

Tim Arends, Executive Director
Traverse City Light & Power

On Nov 4, 2015, at 2:12 PM, Katelyn Zeits <kzeits@traversecitymi.gov> wrote:

Hello,

As you are aware, on Monday night, the City Commission authorized various actions relating to the coal dock property. Below is the motion passed.

"That the City Commission certifies the Traverse City Light and Power Coal Dock properties as not necessary for the operation of the Light and Power Department, as required by the City Charter; and that the City Commission accepts the conveyance of the Coal Dock properties from Traverse City Light and Power as described in the Quit Claim Deed included with the packet materials for the November 2, 2015, Regular Meeting; and further that the Mayor and City Clerk execute all necessary documents to convey the Coal Dock properties described in the Quit Claim Deed Included with the packet materials for the November 2, 2015, Regular Meeting to Rotary Camps and Services for consideration in the amount of one million dollars (\$1,000,000), including the associated bottomlands leases, with the appropriate documents, including a Quit Claim Deed to contain restrictions as outlined in the City Manager's October 29, 2015, communication, with the appropriate documents to be subject to approval as to their substance by the City Manager and their form by the City Attorney; and further that the Mayor and City Clerk execute any necessary documents to assign the current leases, such documents subject to approval as to their substance by the City Manager and their form by the City Attorney; and finally, that the proceeds be distributed as directed by official action of the City Commission at a future date."

Please proceed accordingly with these actions including conveyance documents, a deeds, and assoicated bottlamlands leases.

When documents are ready, please submit them to me for final review and execution by the City Clerk.

If you have any questions, please do not hesitate to contact me.

Thank you,

Katie-

Katelyn Zeits, MPA, CMMC
Deputy City Clerk | City of Traverse City
400 Boardman Ave. | Traverse City, MI 49684
kzeits@traversecitymi.gov | www.traversecitymi.gov/city-clerk
O: 231.922.4480 | F: 231.922.4485

*"If your actions inspire others to dream more, learn more, do more and become more, you are a leader."
-- John Quincy Adams*

FOLLOW TRAVERSE CITY!





**TRAVERSE CITY
LIGHT & POWER**

To: Light & Power Board
From: Tim Arends, Executive Director
Date: April 18, 2016
Subject: Possible Reconsideration of Garland Street

At the last board meeting staff brought before you a request from the City Manager for TCL&P's financial participation in the Garland Street Reconstruction Project that is planned for this summer. The City requested the utility financially support the street lighting elements of the project that included distribution undergrounding in accordance with TCL&P's Decorative Lighting Policy.

At the meeting there were two motions on the floor, one to fund the amount proposed by the City of \$307,000, and the second to fund the amount provided by staff that excludes soft costs and other costs that could be considered not a direct expense (pavement overlay) of this part of the project in the amount of \$169,000. Neither motion passed.

At the request of the Board Chairman, staff has brought this request to the Board to reconsider the minimum funding level of \$169,000. This will allow the utility at a minimum to follow TCL&P's Decorative Lighting Policy until the customer survey addressing the appropriate utility contribution for city projects is completed and reviewed. Following the customer survey the funding level of this project could possibly be reconsidered.

Additionally, at the chairman's request, staff has included the cash balances of the City and TIF funds accounted for by the Downtown Development Authority for the Board's information along with staff's summary spreadsheet showing interdepartmental transactions between the utility and the City.

If the Board would like to move forward with the reconsideration, the following motion would be appropriate.

MOVED BY _____, SECONDED BY _____,

THAT THE BOARD AUTHORIZES AN AMENDMENT TO THE SIX YEAR CAPITAL PLAN AND AUTHORIZES THE EXTENSION OF THE LIGHTING SYSTEM TO INCLUDE GARLAND STREET DECORATIVE LIGHTING IN THE AMOUNT OF \$169,000, MORE OR LESS, FOR THE UNDERGROUND COSTS OF THE SYSTEM.

The City of Traverse City

Office of the City Manager

GOVERNMENTAL CENTER
400 Boardman Avenue
Traverse City, MI 49604
(231) 922-4440
(231) 922-4476 Fax
tcmanage@traversecitymi.gov



April 6, 2016

Traverse City Light & Power Board of Directors
Attn Tim Arends
1131 Hastings Street
Traverse City MI 49686

Re: Request for Participation in Garland Street Realignment Project

Dear Chairman Taylor and Board Members,

As you may know, at the regular meeting of the City Commissioners for the City of Traverse City held on Monday, March 7, 2016, the City Commission authorized the execution of a Property Transfer and Redevelopment Agreement between the City and the Traverse City Convention and Visitor's Bureau Education Foundation. Execution of this agreement will allow the City to proceed with the proposed realignment of Garland Street as shown on the attached map, redirecting traffic away from Grandview Parkway to Union Street on the east end. This project was approved by the City Planning Commission for consistency with the City's Master Plan on July 7, 2011.

Attached is a communication dated March 30, 2016 from City Engineer, Tim Lodge, providing calculations to the allocations to the bid that are in accordance to the policy for decorative lighting. The Garland Street realignment project includes a component for lighting. Therefore, we request funding participation from TCLP in the amount of \$307,879.87 plus any portion of Item C that TCLP finds to be in the best interest of the City or Light & Power. We will continue to work with TCLP staff on identifying the appropriate light fixtures, and reimburse to TCLP in accordance to policy.

At this time, we respectfully request that the lighting component of this project be implemented as part of the Capital Improvements Plan and the Budget for Traverse City Light and Power, and that this item be placed on the agenda for the Tuesday, April 12, 2016 meeting of the Board of Directors for Traverse City Light and Power. I will be in attendance at that meeting to answer any questions the Board may have regarding the project.

Thank you in advance for your consideration in this matter.

Sincerely,

A handwritten signature in black ink, appearing to read "Martin Colburn".

Martin Colburn
City Manager

MC/jd

Attachments: Map of Garland Street Project Area
3/30/16 Memo from City Engineer, Tim Lodge

Copy: W. Twietmeyer, City Treasurer
File

Memorandum

The City of Traverse City
Engineering Department



TO: Marty Colburn, City Manager
Rob Bacigalupi, DDA Executive Director
Tim Arends, TCLP Executive Director

FROM: Timothy J. Lodge, City Engineer *T. Lodge*

DATE: March 30, 2016

SUBJECT: 2016 Garland Street Reconstruction Project -Street Lighting-Update

Upon review of the March 29, 2016 Memorandum in regard to the above referenced project I found that further clarification is needed to align the request with the 2013 Decorative Lighting Policy. The policy reads that:

"Generally, Light & Power's contribution to Decorative Lighting Projects will include the cost of underground infrastructure, engineering, administration, installation charges, inspections and final closeout. The cost of fixtures, and their eventual replacement, shall be borne by the requestor or benefiting party." And "As in all lighting projects, Light & Power retains the right to self-fund projects it deems in the best interest of the City or Light and Power."

Therefore we have recalculated the portion of the project that meets the 2013 Decorative Lighting Policy as follows:

- a. Underground infrastructure including pro-rated costs (18%) for contractor mobilization, traffic control, erosion control, contractor requirements of environmental construction management plan, pavement removal and replacement, electrical/lighted related utility relocations, conduits and wiring, underground light bases, light installation charges, underground service and cabinets, hand-holes and spare conduits for future use in accordance with the attached spreadsheet and not including contingencies:
\$282,458.60
- b. Engineering for the project is \$143,800 or 9% of the construction contract amount. The pro-rated share for Decorative Lighting is calculated at 9% of \$282,421.27 or \$25,421.27.
- c. The fixture cost (\$130,000), the dimming system (\$18,700), the upper receptacle circuits (\$23,322) and the lower receptacle circuits (\$22,880) may also be considered in addition to the request.
\$194,902.00

Therefore we recommended that the City/DDA request funding participation from TCLP in the amount of \$307,879.87 plus any portion of Item C that TCLP finds to be in the best interest of the City or Light & Power.

2016 Garland Street Reconstruction Project

Item No.	Est Qty	Unit	Description of Items	Client's Crims and Debt, Inc. Bld Amount		FUNDING CATEGORIES	
				Unit Price	Total Price	Westwacht	Lighting
1	1.00	Lum	Approach (2")	74,000.00	74,000.00		10,350.00
2	1.00	Lum	Traffic Control	30,000.00	30,000.00		8,200.00
3	1.00	Lum	Fluorescent Control Devices	10,000.00	10,000.00		2,000.00
4	1.00	Lum	Connecter Requirements of Environmental Construction Management Plan	30,000.00	30,000.00		10,000.00
5	50.00	Cyd	Non-Haz. Contaminated Material Handling and Disposal, Ltd	75.00	3,750.00		3,750.00
6	0.00	En	Dr Structure, Rem	500.00	1,500.00		
7	0.00	En	Dr Structure, Abandon	500.00	1,500.00		
8	204.00	Fl	Sheet, Rem, Lvs 24x36 In	74.00	15,096.00		
9	400.00	Fl	Sheet, Abandon, Lvs 24x36 In	37.00	14,800.00		
10	1.00	En	Blockout, 12 In	250.00	250.00		
11	155.00	Fl	Sheet, 12x12 RCP, 15 In	50.00	7,750.00		
12	720.00	Fl	Sheet, 12x12 RCP, 18 In	50.00	36,000.00		
13	874.00	Fl	Sheet, 12x12 RCP, 24 In	50.00	43,700.00		
14	11.00	En	Crch Work, 24 In Dia, 1077 Stamp	1,700.00	18,700.00		
15	50.00	En	Dr Structure, 48 In Dia	1,800.00	90,000.00		
16	1.00	En	Dr Structure, 84 In Dia	8,000.00	8,000.00		
17	53.00	En	Dr Structure Cover, 12x12x12 (Steel)	665.00	35,205.00		
18	2.00	En	Dr Structure Cover, 12x12x12 (Steel)	665.00	1,330.00		
19	52.00	En	Dr Structure Cover, 12x12x12 (Steel)	665.00	34,580.00		
20	1.00	En	Dr Structure Cover, 12x12x12 (Steel)	665.00	665.00		
21	51.00	En	Dr Structure Cover, 12x12x12 (Steel)	665.00	33,915.00		
22	414.00	En	Dr Structure Cover, 12x12x12 (Steel)	665.00	275,406.00		
23	4.00	En	Dr Structure Cover, 12x12x12 (Steel)	665.00	2,660.00		
24	2.00	En	Dr Structure Cover, 12x12x12 (Steel)	665.00	1,330.00		
25	300.00	En	Dr Structure Cover, 12x12x12 (Steel)	665.00	199,500.00		
26	400.00	En	Dr Structure Cover, 12x12x12 (Steel)	665.00	266,000.00		
27	1.00	En	Dr Structure Cover, 12x12x12 (Steel)	665.00	665.00		
28	24.00	En	Dr Structure Cover, 12x12x12 (Steel)	665.00	15,960.00		
29	244.00	En	Dr Structure Cover, 12x12x12 (Steel)	665.00	162,260.00		
30	254.00	En	Dr Structure Cover, 12x12x12 (Steel)	665.00	169,010.00		
31	1.00	En	Dr Structure Cover, 12x12x12 (Steel)	665.00	665.00		
32	205.00	En	Dr Structure Cover, 12x12x12 (Steel)	665.00	137,325.00		
33	5.00	En	Dr Structure Cover, 12x12x12 (Steel)	665.00	3,325.00		
34	35.00	En	Dr Structure Cover, 12x12x12 (Steel)	665.00	23,275.00		
35	6.00	En	Dr Structure Cover, 12x12x12 (Steel)	665.00	3,990.00		
36	1.00	En	Dr Structure Cover, 12x12x12 (Steel)	665.00	665.00		
37	1.00	En	Dr Structure Cover, 12x12x12 (Steel)	665.00	665.00		
38	1.00	En	Dr Structure Cover, 12x12x12 (Steel)	665.00	665.00		
39	1.00	En	Dr Structure Cover, 12x12x12 (Steel)	665.00	665.00		
40	1.00	En	Dr Structure Cover, 12x12x12 (Steel)	665.00	665.00		
41	10.17	En	Dr Structure Cover, 12x12x12 (Steel)	665.00	6,763.05		
42	170.00	En	Dr Structure Cover, 12x12x12 (Steel)	665.00	113,050.00		
43	3271.00	En	Dr Structure Cover, 12x12x12 (Steel)	665.00	2,175,815.00		
44	627.00	En	Dr Structure Cover, 12x12x12 (Steel)	665.00	417,045.00		
45	2.00	En	Dr Structure Cover, 12x12x12 (Steel)	665.00	1,330.00		
46	3.00	En	Dr Structure Cover, 12x12x12 (Steel)	665.00	1,995.00		
47	3.00	En	Dr Structure Cover, 12x12x12 (Steel)	665.00	1,995.00		
48	1.00	En	Dr Structure Cover, 12x12x12 (Steel)	665.00	665.00		
49	2.00	En	Dr Structure Cover, 12x12x12 (Steel)	665.00	1,330.00		
50	2.00	En	Dr Structure Cover, 12x12x12 (Steel)	665.00	1,330.00		
51	45.00	En	Dr Structure Cover, 12x12x12 (Steel)	665.00	29,925.00		
52	327.00	En	Dr Structure Cover, 12x12x12 (Steel)	665.00	217,545.00		
53	10.00	En	Dr Structure Cover, 12x12x12 (Steel)	665.00	6,650.00		
54	12.00	En	Dr Structure Cover, 12x12x12 (Steel)	665.00	7,980.00		
55	240.00	En	Dr Structure Cover, 12x12x12 (Steel)	665.00	159,600.00		
56	400.00	En	Dr Structure Cover, 12x12x12 (Steel)	665.00	266,000.00		
57	31.00	En	Dr Structure Cover, 12x12x12 (Steel)	665.00	20,615.00		
58	271.00	En	Dr Structure Cover, 12x12x12 (Steel)	665.00	180,215.00		
59	30.00	En	Dr Structure Cover, 12x12x12 (Steel)	665.00	19,950.00		
60	514.00	En	Dr Structure Cover, 12x12x12 (Steel)	665.00	341,810.00		
61	130.00	En	Dr Structure Cover, 12x12x12 (Steel)	665.00	86,450.00		

1 of 2
3/30/2016
8:59 AM

2016 Garland Street Reconstruction Project
Bld Date: March 28, 2016 10:00 AM
City Commission Date: April 4, 2016

2016 Garland Street Reconstruction Project Cost Est - Bld Results

City of Traverse City				
Cash Balances				
February 29, 2016 - City/March 31, 2016 - DDA				
Fund	Number	Fund Name	Account Name	Balance
101	001.00	GENERAL FUND	CASH IN BANK	4,220,884.98
101	011.00	GENERAL FUND	CASH ON HAND	400.00
101	018.00	GENERAL FUND	PETTY CASH	3,300.00
101	120.00	GENERAL FUND	INVESTMENTS	580,416.57
		GENERAL FUND Total		4,805,001.55
102	001.00	BUDGET STABILIZATION FUND	CASH IN BANK	12,254.08
102	120.00	BUDGET STABILIZATION FUND	INVESTMENTS	748,995.92
102	120.01	BUDGET STABILIZATION FUND	INVESTMENT - FAIR MKT VALUE	7,334.08
		BUDGET STABILIZATION FUND Total		768,584.08
202	001.00	MAJOR STREETS FUND	CASH IN BANK	(28,818.15)
		MAJOR STREETS FUND Total		(28,818.15)
203	001.00	LOCAL STREETS FUND	CASH IN BANK	(509,922.81)
		LOCAL STREETS FUND Total		(509,922.81)
204	001.00	MAJOR STREET-TRUNKLINE MAINTENANCE FUND	CASH IN BANK	67,406.85
		MAJOR STREET-TRUNKLINE MAINTENANCE FUND Total		67,406.85
206	001.00	HAZ-MAT FUND	CASH IN BANK	65,398.86
		HAZ-MAT FUND Total		65,398.86
231	001.00	COLLEGE PARKING FUND	CASH IN BANK	11,256.51
		COLLEGE PARKING FUND Total		11,256.51
233	001.00	ACT 345 MILLAGE	CASH IN BANK	1,723,482.77
		ACT 345 MILLAGE Total		1,723,482.77
239	001.00	BRWN BRIDGE TRUST PARKS IMPROVEMENT FUND	CASH IN BANK	1,393,711.72
		BRWN BRIDGE TRUST PARKS IMPROVEMENT FUND Total		1,393,711.72
241	001.00	TRAVERSE CITY/GARFIELD JOINT PLANNING	CASH IN BANK	23,264.94
		TRAVERSE CITY/GARFIELD JOINT PLANNING Total		23,264.94
242	001.00	STORMWATER & WASTEWATER GRANT FUND	CASH IN BANK	(276,377.44)
		STORMWATER & WASTEWATER GRANT FUND Total		(276,377.44)
243	001.00	ROAD COMMISS MILLAGE STREET PROJECT FUND	CASH IN BANK	559,663.63
		ROAD COMMISS MILLAGE STREET PROJECT FUND Total		559,663.63
245	001.00	CAPITAL PROJECTS FUND	CASH IN BANK	461,780.16
245	120.00	CAPITAL PROJECTS FUND	INVESTMENTS	79,664.67
		CAPITAL PROJECTS FUND Total		541,444.83
247	001.00	BOARDMAN RIVER DAM REMOVAL & RESTORATION	CASH IN BANK	0.38
		BOARDMAN RIVER DAM REMOVAL & RESTORATION Total		0.38
250	001.00	HERITAGE CENTER FUND	CASH IN BANK	(54,661.19)
		HERITAGE CENTER FUND Total		(54,661.19)
260	001.00	CHERRY CAPITAL CABLE FUND	CASH IN BANK	4,740.91
		CHERRY CAPITAL CABLE FUND Total		4,740.91
264	001.00	PEG CAPITAL FUND	CASH IN BANK	12,006.14
		PEG CAPITAL FUND Total		12,006.14
277	001.00	SENIOR CENTER BUILDING FUND	CASH IN BANK	226,032.53
		SENIOR CENTER BUILDING FUND Total		226,032.53
278	001.00	COUNTY SENIOR CENTER FUND	CASH IN BANK	49,989.22
		COUNTY SENIOR CENTER FUND Total		49,989.22
279	001.00	BROWN BRIDGE MAINTENANCE FUND	CASH IN BANK	25,092.87
		BROWN BRIDGE MAINTENANCE FUND Total		25,092.87
283	001.00	COAST GUARD COMMITTEE FUND	CASH IN BANK	525.14
		COAST GUARD COMMITTEE FUND Total		525.14
292	001.00	BANNER PROGRAM FUND	CASH IN BANK	19,640.00
		BANNER PROGRAM FUND Total		19,640.00
296	001.00	OPERA HOUSE FUND	CASH IN BANK	41,911.19
		OPERA HOUSE FUND Total		41,911.19
298	001.00	STORMWATER FUND	CASH IN BANK	250,000.00
		STORMWATER FUND Total		250,000.00
306	001.00	L T G O DEBT RETIREMENT FUND-TAX EXEMPT	CASH IN BANK	325.00
		L T G O DEBT RETIREMENT FUND-TAX EXEMPT Total		325.00

City of Traverse City				
Cash Balances				
February 29, 2016 - City/March 31, 2016 - DDA				
Fund	Number	Fund Name	Account Name	Balance
307	001.00	L T G O DEBT RETIREMENT FUND-TAXABLE	CASH IN BANK	10,048.50
		L T G O DEBT RETIREMENT FUND-TAXABLE Total		10,048.50
308	001.00	OLD TOWN L T G O DEBT RETIREMENT FUND	CASH IN BANK	100.00
		OLD TOWN L T G O DEBT RETIREMENT FUND Total		100.00
496	001.00	PARKING BOND CONSTRUCTION FUND (TAX EX)	CASH IN BANK	739,416.15
		PARKING BOND CONSTRUCTION FUND (TAX EX) Total		739,416.15
497	001.00	PARKING BOND CONSTRUCTION FUND (TAXABLE)	CASH IN BANK	107,409.70
		PARKING BOND CONSTRUCTION FUND (TAXABLE) Total		107,409.70
565	001.00	INDUSTRIAL DEVELOPMENT FUND	CASH IN BANK	1,026,784.22
		INDUSTRIAL DEVELOPMENT FUND Total		1,026,784.22
582	001.00	ELECTRIC UTILITY FUND	CASH IN BANK	3,881,049.67
582	015.07	ELECTRIC UTILITY FUND	MPPA COMPETITIVE TRUST	336,719.89
582	100.00	ELECTRIC UTILITY FUND	UTILITY BILLS	(111,787.81)
582	120.00	ELECTRIC UTILITY FUND	INVESTMENTS	14,250,916.29
582	120.01	ELECTRIC UTILITY FUND	INVESTMENT - FAIR MKT VALUE	(18,195.80)
		ELECTRIC UTILITY FUND Total		18,338,702.24
583	001.00	FIBER OPTICS FUND	CASH IN BANK	271,038.35
		FIBER OPTICS FUND Total		271,038.35
585	001.00	AUTOMOBILE PARKING SYSTEM FUND	CASH IN BANK	5,562,339.04
585	011.00	AUTOMOBILE PARKING SYSTEM FUND	CASH ON HAND	8,535.89
585	019.00	AUTOMOBILE PARKING SYSTEM FUND	EMERGENCY FUNDS	25,492.43
585	019.01	AUTOMOBILE PARKING SYSTEM FUND	INVESTMENT - FAIR MKT VALUE	1,935.32
		AUTOMOBILE PARKING SYSTEM FUND Total		5,598,302.68
590	001.00	WASTEWATER DISPOSAL FUND	CASH IN BANK	992,972.33
590	011.00	WASTEWATER DISPOSAL FUND	CASH ON HAND	83.71
		WASTEWATER DISPOSAL FUND Total		993,056.04
591	001.00	WATER FUND	CASH IN BANK	3,465,622.14
591	013.02	WATER FUND	INVESTMENT - FAIR MKT VALUE	2,342.80
591	019.00	WATER FUND	EMERGENCY FUNDS	49,723.70
		WATER FUND Total		3,517,688.64
594	001.00	DUNCAN L. CLINCH MARINA FUND	CASH IN BANK	291,752.38
594	011.00	DUNCAN L. CLINCH MARINA FUND	CASH ON HAND	858.88
		DUNCAN L. CLINCH MARINA FUND Total		292,611.26
661	001.00	GARAGE FUND	CASH IN BANK	2,103,255.11
		GARAGE FUND Total		2,103,255.11
702	001.00	GRAND TRAVERSE COUNTY AGENCY FUND	CASH IN BANK	264,780.64
		GRAND TRAVERSE COUNTY AGENCY FUND Total		264,780.64
710	001.00	BROWN BRIDGE TRUST FUND	CASH IN BANK	417,442.08
710	120.00	BROWN BRIDGE TRUST FUND	INVESTMENTS	11,682,245.42
710	120.01	BROWN BRIDGE TRUST FUND	INVESTMENT - FAIR MKT VALUE	225,624.58
		BROWN BRIDGE TRUST FUND Total		12,325,312.08
711	001.00	CEMETERY TRUST FUND	CASH IN BANK	(12,762.30)
711	120.00	CEMETERY TRUST FUND	INVESTMENTS	274,053.03
711	120.01	CEMETERY TRUST FUND	INVESTMENT - FAIR MKT VALUE	4,675.47
		CEMETERY TRUST FUND Total		265,966.20
712	001.00	CEMETERY PERPETUAL CARE TRUST FUND	CASH IN BANK	34,338.10
712	120.00	CEMETERY PERPETUAL CARE TRUST FUND	INVESTMENTS	373,495.17
712	120.01	CEMETERY PERPETUAL CARE TRUST FUND	INVESTMENT - FAIR MKT VALUE	15,279.33
		CEMETERY PERPETUAL CARE TRUST FUND Total		423,112.60
722	001.00	MCCAULEY ESTATE EXPENDABLE TRUST FUND	CASH IN BANK	80,539.04
722	120.00	MCCAULEY ESTATE EXPENDABLE TRUST FUND	INVESTMENTS	94,725.91
722	120.01	MCCAULEY ESTATE EXPENDABLE TRUST FUND	INVESTMENT - FAIR MKT VALUE	3,903.09
		MCCAULEY ESTATE EXPENDABLE TRUST FUND Total		179,168.04
732	001.00	POLICE AND FIRE RETIREMENT TRUST FUND	CASH IN BANK	654,460.59
732	120.00	POLICE AND FIRE RETIREMENT TRUST FUND	INVESTMENTS	24,180,109.05
		POLICE AND FIRE RETIREMENT TRUST FUND Total		24,834,569.64

City of Traverse City				
Cash Balances				
February 29, 2016 - City/March 31, 2016 - DDA				
Fund	Number	Fund Name	Account Name	Balance
733	001.00	POLICE & FIRE RETIREE HEALTH TRUST FUND	CASH IN BANK	3,087,944.66
		POLICE & FIRE RETIREE HEALTH TRUST FUND Total		3,087,944.66
740	001.00	RETIREE'S HEALTH INSURANCE FUND	CASH IN BANK	(251,354.53)
		RETIREE'S HEALTH INSURANCE FUND Total		(251,354.53)
741	120.00	MERS RETIREE HEALTH CARE TRUST	INVESTMENTS	4,290,162.85
		MERS RETIREE HEALTH CARE TRUST Total		4,290,162.85
750	001.00	IMPREST PAYROLL FUND	CASH IN BANK	(461,867.21)
		IMPREST PAYROLL FUND Total		(461,867.21)
801	001.00	SPECIAL ASSESSMENT FUND	CASH IN BANK	953,483.74
801	120.00	SPECIAL ASSESSMENT FUND	INVESTMENTS	4,685.36
		SPECIAL ASSESSMENT FUND Total		958,169.10
TIF 2		TIF 2 (ADDITIONAL INFORMATION PROVIDED)	FUND BALANCE	1,174,813.00
		TIF 2 (ADDITIONAL INFORMATION PROVIDED) Total		1,174,813.00
TIF 97		TIF 97 (ADDITIONAL INFORMATION PROVIDED)	FUND BALANCE	2,600,631.00
		TIF 97 (ADDITIONAL INFORMATION PROVIDED) Total		2,600,631.00
		Grand Total		92,409,520.49

Traverse City Light and Power
TIF Fund Cash Balances – email from Rob Bacigalupi
April 2016

Sorry for sending this via email but I am hoping this will provide the information you are looking for. We have two Capital funds: TIF 2 and TIF 97.

TIF 2 - As of March 31, this fund has a fund balance of \$1,174,813. This entire balance is obligated either for remaining projects in the TIF 2 District, the inter fund loan for Garland Street or to be disbursed to taxing authorities in July 2017.

TIF 97 - As of March 31, this fund has a balance of \$2,600,631. All of these funds are committed, largely for two projects, the Pine Street Pedestrian Way and Garland Street.

If you need additional information, just let me know.

Rob

Traverse City Light and Power
 Electric Fund
 City Fee/Special Projects/Expenditures Absorbed/Cost Sharing
 May 2015 Updated 4/19/2016

Description	FYE 2010-11	FYE 2011-12	FYE 2012-13	FYE 2013-14	FYE 2014-15	FYE 2015-16	Total
City Fee required by Charter	1,511,219.16	1,598,157.39	1,599,865.97	1,775,851.33	1,863,259.00	1,801,000.00	10,149,352.85
Special Projects funded by TCL&P							
Community Investment Fund	15,000.00	-	1,000,000.00	-	-	-	1,015,000.00
Wind Turbine/Solar Energy System Unit	-	-	-	20,850.00	-	-	20,850.00
West Front St Lighting Project	-	-	-	-	-	501,840.66	501,840.66
LED Holiday lighting	-	-	-	-	5,863.93	9,962.32	15,826.25
Solar/wind street lights (PILOT EO FUNDING)	-	-	-	-	4,000.00	-	4,000.00
Installing Lights for Holiday Season	64,473.31	51,469.28	32,426.63	33,295.22	25,714.89	41,243.66	248,622.99
Total Special Projects funded by TCL&P	79,473.31	51,469.28	1,032,426.63	54,145.22	35,578.82	553,046.64	1,806,139.90
General Fund Expenditures absorbed by TCL&P							
Street Lighting	183,552.72	183,539.57	183,692.25	183,972.60	187,214.71	188,092.32	1,110,064.17
Traffic Signal							
Traffic Signal Employees (2 full-time)	151,425.92	176,889.60	165,452.95	181,115.55	195,223.22	191,353.14	1,061,460.38
Traffic Signal Truck	21,192.00	28,440.00	28,500.00	20,700.00	20,700.00	31,200.00	150,732.00
Traffic Signal Materials	18,871.29	10,548.17	45,624.61	12,221.82	4,120.06	17,000.00	108,385.95
Less MDOT Revenue	(6,844.99)	(2,624.76)	(2,055.54)	(2,455.95)	(603.65)	(1,000.00)	(15,584.89)
GT County Road Commission	(25,657.32)	(28,984.12)	(22,263.28)	(18,657.31)	(21,624.51)	(22,000.00)	(139,186.54)
Subtotal traffic signal	158,986.90	184,268.89	215,258.74	192,924.11	197,815.12	216,553.14	1,165,806.90
Total General Fund Expenditures absorbed by TCL&P	342,539.62	367,808.46	398,950.99	376,896.71	385,029.83	404,645.46	2,275,871.07
Cost Sharing Services between the City and TCL&P							
Human Resources	11,227.83	10,931.08	18,867.15	42,107.28	33,288.78	20,000.00	136,422.12
Treasurer Office Wages	215,442.67	232,286.00	228,450.82	240,774.26	238,160.53	237,416.73	1,392,531.01
Meter Reading Wages	(209,824.95)	(223,686.00)	(209,686.04)	(222,437.85)	(232,880.66)	(225,651.97)	(1,324,167.47)
Garage overhead allocations	-	24,999.96	24,999.96	25,500.00	25,500.00	26,016.00	127,015.92
Total cost sharing services between the City and TCL&P	16,845.55	44,531.04	62,631.89	85,943.69	64,068.65	57,780.76	331,801.58
Grand Total	\$ 1,950,077.64	\$ 2,061,966.17	\$ 3,093,875.48	\$ 2,292,836.95	\$ 2,347,936.30	\$ 2,816,472.86	\$ 14,563,165.40
Operating Revenue	\$ 29,981,458	\$ 31,834,482	\$ 31,809,664	\$ 35,292,126	\$ 37,143,589	\$ 35,928,700	
% without cost sharing services between City and TCL&P	6.45%	6.34%	9.55%	6.25%	6.15%	7.68%	

- Notes
- 1) 2015-16 fiscal year city fee was based on budgeted amount.
 - 2) \$15,000 in Community Investment Fund was for universal small boat launch/Clinch Park.
 - 3) Traffic signal employees costs was taken from corresponding year budget payroll spreadsheets.
 - 4) Traffic signal truck was vehicle 106. Does not include gas consumption or normal maintenance.
 - 5) Traffic signal materials was budgeted expenditures for the 2015-16 year.
 - 6) Street lighting obtained from utility billing system.
 - 7) Installing lights for holiday season costs directly from Cityworks and Shine contract 2015-16 fiscal year and internal labor.
 - 8) MDOT Revenue and GT County Road Commission is an estimation for 2015-16 year.
 - 9) Human Resource Allocation based on actual amount paid with 2015-16 estimated.
 - 10) Treasurer Office and Meter Reading Wages based on payroll spreadsheets.
 - 11) Garage costs only include monthly rate for overhead.



**TRAVERSE CITY
LIGHT & POWER**

To: Light & Power Board
From: Tim Arends, Executive Director
Date: April 18, 2016
Subject: Wind Contract

Michigan Public Power Agency (“MPPA”) is working with a leading energy renewable developer in the world with substantial experience on developing projects throughout North America on a wind contract (“Project”) in the thumb area. Limited information is available at this time, because of the controversy in the thumb area of Michigan relating to adding additional wind capacity in that area.

The preliminary terms before final negotiation of the contract available for disclosure are as follows:

- 20 years beginning upon the first full calendar year of operation but no later than December 31, 2019.
- Below \$50 per MWh levelized price over the 20-year term that is expected to have minimal impact to overall power supply costs.
- A default payment in the event the project does not meet the commercial operation date on or before December 31, 2019.
- Availability guarantee of 85% throughout the 20-year term.

An analysis of this project was performed by RTD Consulting, LLC and is included for your review.

In summary, some advantages of a renewable wind energy contract are as follows:

- Allows the municipality to minimally meet the 10% renewable standard within Public ACT 295 once the Heritage Sustainability project is expired in 2030 and assist in meeting the proposed goal of 15% renewable standard that may be strongly encouraged by the State of Michigan in upcoming legislation.
- Significant advancement has been made in the wind energy production allowing for greater output.
- There is no fuel or commodity associated costs related to the generation leading to price stability
- The project will be taking advantage of the federal wind tax \$.023/kWh available through 2016 and the production tax credit has a phasing clause of 20% over the next three years. This will lead to savings for the utility.

FOR THE LIGHT & POWER BOARD MEETING OF APRIL 26, 2016

The disadvantages of a renewable wind energy contract are as follows:

- Wind is typically classified as intermittent and cannot be relied on to meet the demand of the energy system.
- Generally speaking, with our current wind contract energy produced is at its highest in the early morning hours when the utility demand and LMP market is at its lowest.

The lists above do not intend to be all inclusive.

Additionally included within the packet is the exposure the utility has to the MISO market in upcoming years that would be reduced by the authorization of this project.

Staff is requesting authority for the utility's designated member representative of the MPPA & TCL&P Energy Services Agreement, the Executive Director, to sign the a letter of authorization acknowledging the wind energy project purchase power commitment once terms are finalized and within the disclosed terms previously mentioned.

MOVED BY _____, SECONDED BY _____,

**THE BOARD AUTHORIZES THE DESIGNATED MEMBER REPRESENTATIVE OF
THE MPPA & TCL&P ENERGY SERVICES AGREEMENT, EXECUTIVE
DIRECTOR, TO SIGN MPPA'S LETTER OF AUTHORIZATION FOR THE WIND
ENERGY PURCHASE POWER COMMITMENT ONCE TERMS ARE FINALIZED
AND WITHIN THE DISCLOSED TERMS PRESENTED TO THE BOARD.**

As you requested I have reviewed the information you provided from MPPA wind farm project. I have also updated the original spreadsheet I provided in my 11/11/2015 memo. With the new information, I relooked at the analysis provided and have the following comments.

Discussion:

1. REC Requirements: The revised analysis provided by MPPA use 20% REC requirement. There is no stated rationale for this increase. Without some compelling reason to increase this target from 15% to 20% it becomes an economic argument. However, if the average cost of the avoided energy is the same or very close to the proposed project then the "green energy" is not a premium cost and may be preferable from a policy perspective.

Another consideration is the prospect of the availability of solar energy. While it will be more expensive than the wind project, it will be energy that will be available only during daylight hours and may be competitive with the average MISO LMP's during daylight hours. It will likely have a higher capacity credit from MISO. This is an emerging technology that may fit into the resource mix if TCL&P still has a need for additional RECs.

2. Reduction of NANR Additions: MPPA reduced the available energy from the NANR as they do not think the additional 2.8 MW, which TCL&P will have an 8% interest in will be built. This will increase the need for additional RECs from other projects. This is reflected in Table 1 below.
3. Economic analysis: I have repeated the analysis provided in the 11/11/2015 memo as it is unchanged.

The economic evaluation provided by MPPA shows the cost of the project over the 20 year life of the PPA. This projection is less than the expected cost of energy from MISO, provided Renewable Energy Credits (REC) and Capacity Credits are as forecasted. While the analysis is reasonable it may be somewhat optimistic. In discussions with MPPA staff, they acknowledge this issue but as there is not available data that can be used to directly calculate the actual output from the proposed project, they used a proxy of the Beebe project. Also used is a "multiplier" that allows for a comparison of MISO rates and the cost of the project. This multiplier allows sensitivity analyses to gauge the financial risk of the project.

In short, the cost of the project does not appear to increase the cost of wholesale power.

4. Energy Forecast: Based on the forecast provided by MPPA Table 1 shows TCL&P will meet the REC's target at 10%. The 15% target would require 4.5-5.0MW depending on the capacity factor of the project. Should the 20% target be used, the additional capacity would require 8.5-9.0 MW, again depending on the capacity factor of the project.

Table 1

	Energy Requirements see note 1	MPPA Renewables	Heritage	Proposed Renewables Project	Total Renewables Mwh	REC Target @10%	% Over/Under Target	REC Target @15%	% Over/Under Target	REC Target @20%	% Over/Under Target
2016	336,166	10331	26280		36611	33,617	8.9%	50,425	-27.4%	67,233.2	-45.5%
2017	336,908	10331	26280	17520	54131	33,691	60.7%	50,536	7.1%	67,381.5	-19.7%
2018	337,951	10331	26280	17520	54131	33,795	60.2%	50,693	6.8%	67,590.3	-19.9%
2019	339,218	10331	26280	17520	54131	33,922	59.6%	50,883	6.4%	67,843.7	-20.2%
2020	340,646	10331	26280	17520	54131	34,065	58.9%	51,097	5.9%	68,129.3	-20.5%
2021	342,189	10331	26280	17520	54131	34,219	58.2%	51,328	5.5%	68,437.9	-20.9%
2022	343,822	10331	26280	17520	54131	34,382	57.4%	51,573	5.0%	68,764.3	-21.3%
2023	345,529	10331	26280	17520	54131	34,553	56.7%	51,829	4.4%	69,105.8	-21.7%
2024	347,305	10331	26280	17520	54131	34,731	55.9%	52,096	3.9%	69,461.0	-22.1%
2025	349,138	10331	26280	17520	54131	34,914	55.0%	52,371	3.4%	69,827.6	-22.5%
2026	351,028	10331	26280	17520	54131	35,103	54.2%	52,654	2.8%	70,205.6	-22.9%
2027	352,964	10331	26280	17520	54131	35,296	53.4%	52,945	2.2%	70,592.8	-23.3%
2028	354,942	10331	26280	17520	54131	35,494	52.5%	53,241	1.7%	70,988.5	-23.7%
2029	356,964	10331	26280	17520	54131	35,696	51.6%	53,545	1.1%	71,392.8	-24.2%
2030	359,014	10331	26280	17520	54131	35,901	50.8%	53,852	0.5%	71,802.8	-24.6%
2031	359,014	10331		17520	27851	35,901	-22.4%	53,852	-48.3%	71,802.8	-61.2%
2032	359,014	10331		17520	27851	35,901	-22.4%	53,852	-48.3%	71,802.8	-61.2%
2033	359,014	10331		17520	27851	35,901	-22.4%	53,852	-48.3%	71,802.8	-61.2%
2034	359,014	10331		17520	27851	35,901	-22.4%	53,852	-48.3%	71,802.8	-61.2%
2035	359,014	10331		17520	27851	35,901	-22.4%	53,852	-48.3%	71,802.8	-61.2%
2036	359,014	10331		17520	27851	35,901	-22.4%	53,852	-48.3%	71,802.8	-61.2%

Notes:
1) Energy forecast is the MISO energy forecast prepared by MPPA in Oct 2015. The years 2031-2036 are extended using average growth over the 2015-2030 period.

Conclusions: The conclusion remains essentially unchanged from the 11/11/2015 memo. These are restated below for convenience.

This project should be pursued with MPPA at the level proposed by MPPA (3.32Mw). This amount could be increase to 6Mw if needed if the economic parameters remain as stated. The potential for an increase in REC's is reasonable given the current level of discussion within the State of Michigan. The cost of this project appears to be at a level that will not raise the average cost of purchased power to TCL&P. It also adds another tier of REC's with a different expiration date than existing REC's. However, this alone will not be sufficient to meet a 15% REC's requirement. Therefore, additional REC's will need to be pursued.

Given the wind developer has increased the proposed project's capacity factor to 40%, 5MW will reach the REC's target of 15%. The ultimate level of additional REC's purchased will be a matter of the Boards view of their desire to be "green" and the likelihood that the REC's

requirements are going to be increased above the current 10% requirement. Based on the data provided this is an economic neutral decision.

Please let me know if you need any additional information.



MPPA Wind Purchase Power Agreement

Term Sheet

1. Developer

A leading renewable energy developer in the world with substantial experience developing wind projects throughout North America.

2. Purchase Term

20 years beginning upon the first full calendar year of operation but no later than December 31, 2019.

3. Contract Price

Below \$50 per MWh levelized price over the 20-year term that is expected to result in very little impact to overall power supply costs.

4. Project Location

In Michigan's thumb region in very close proximity to the 345 kV transmission system.

5. Buyer Protections

Default payment in the event that the Project is not meet a Commercial Operation Date on or before December 31, 2019.

Availability guarantee of 85% throughout the 20-year term.

6. Payment Terms

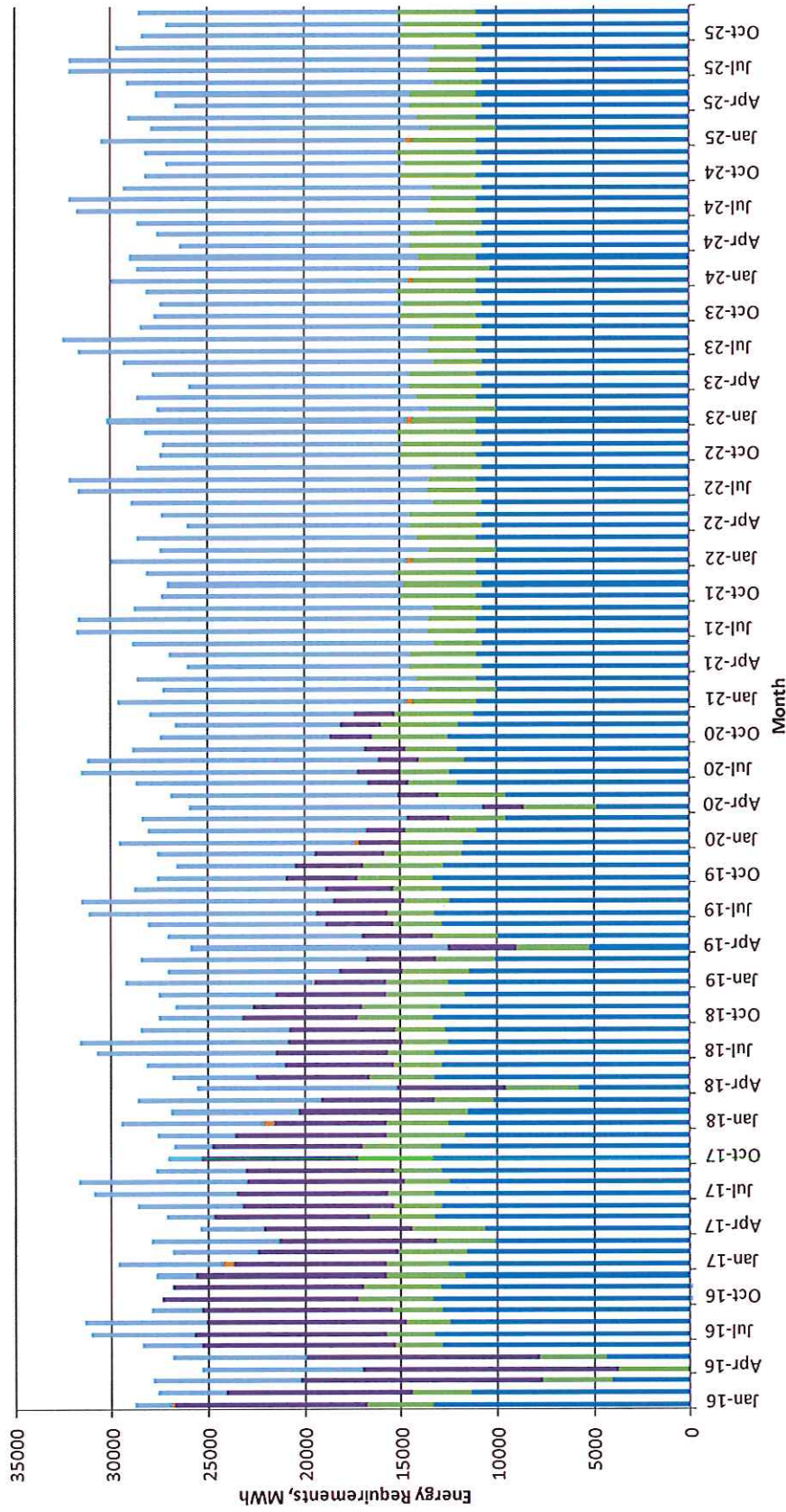
PPA costs will be charged on MPPA Member's weekly Energy Services Project bill.

	Current		2018		Percent Renewable
	Forecast	Renewable	Forecast	Load	
	44,314	343,628	343,628		21.2%
	6,341	67,130	67,130		22.6%
	3,804	119,482	119,482		16.6%
	7,306	104,161	104,161		19.1%
	31,357	318,398	318,398		16.5%
	6,341	44,680	44,680		14.2%
	3,974	52,046	52,046		17.3%
	156,985	1,102,343	1,102,343		15.4%
	NA				
	17,003	81,932	81,932		30.0%
	12,682	113,500	113,500		22.3%
	3,648	38,546	38,546		20.4%
	3,337	40,601	40,601		18.6%
	39,682	337,951	337,951		15.5%
	25,169	321,118	321,118		17.0%
	16,790	395,931	395,931		14.9%

	PPA Percentage	Installed Capacity	40% CF MWh
Bay City	5.44%	8,160	28,593
Charlevoix	1.68%	2,520	8,830
Chelsea	3.04%	4,560	15,978
Eaton Rapids	2.40%	3,600	12,614
Grand Haven	4.00%	6,000	21,024
Harbor Springs	0.00%	0,000	-
Hart	0.96%	1,440	5,046
Holland	2.40%	3,600	12,614
Lansing	59.44%	87,960	308,212
Lowell	1.44%	2,160	7,569
Petoskey	2.40%	3,600	12,614
Portland	0.80%	1,200	4,205
St Louis	0.80%	1,200	4,205
Traverse City	2.40%	3,600	12,614
Wyandotte	5.60%	8,400	29,434
Zeeland	7.20%	12,000	42,048
Total	100.00%	150,000	525,600

Power Supply Forecast Sources

■ Coal
 ■ Gas
 ■ Renewables
 ■ PPA
 ■ Peaking
 ■ Unhedged



Traverse City @2.4% of Total Wind Farm = 12,614 annual MWh's at 40% Capacity Factor. Monthly energy average = 1,051 MWh's

Energy Supply: All data below is in MWh's.

	2016	2017	2018	2019	2020	2021	2022	2023	2024	2025
Load	336,167	336,908	337,951	339,180	341,407	342,189	343,689	345,529	347,305	349,012
Belle River	59,258	65,769	65,825	65,769	62,909	62,713	62,713	62,713	62,885	62,713
Campbell 3	63,151	81,765	76,812	72,800	67,979	67,769	67,769	67,769	67,955	67,769
Stoney Corners	27,000	26,528	26,528	26,528	26,652	26,528	26,528	26,528	26,631	26,528
Landfill	12,383	12,349	12,349	12,343	12,377	12,343	12,343	12,343	12,377	12,343
Kalkaska CT	197	553	513	79	237	316	355	355	276	434
PPA's	127,824	94,464	68,880	43,200	25,712	-	-	-	-	-
Market	46,353	55,480	87,044	118,462	145,542	172,521	173,981	175,821	177,181	179,225

Although 12,000 MWh's does not seem like that much compared to your current market needs, the energy is not "controllable" from the standpoint of knowing what hours you will actually see the energy. I am hesitant to recommend any more wind energy than what is currently proposed.

MPPA is currently looking at utility-scale solar options to add more renewables in the future. The "On-Peak" nature of solar is certainly an advantage and we will continue to keep you informed.

Franklin Energy

WHEN *Experience* MATTERS



TRAVERSE CITY
LIGHT & POWER
Investing Our Energy In You

ENERGY  **SMART**
PROGRAM

Franklin Energy, HQ in Port Washington WI, was founded in 1994 as an Engineering Firm. In 1998, we were asked to design an energy efficiency program for WE Energies in Wisconsin. It was successful. We are now active in 28 states solely implementing utility energy efficiency programs.

2016

Experience. Delivery. Results.

Franklin
Energy



TRAVERSE CITY
LIGHT & POWER
Investing Our Energy In You

ENERGY  **SMART**
PROGRAM

History of the Energy Optimization Program

- **Public Act 295, 2008**
 - 10% of electricity from renewables**
 - 1% savings of electric retail sales**
- **Michigan Public Service Commission**
 - **designed energy efficiency program rules**
 - **reviews utility efficiency programs annually**

2016

Experience. Delivery. Results.

Franklin
Energy



TRAVERSE CITY
LIGHT & POWER
Investing Our Energy In You

ENERGY  SMART
PROGRAM

☀️ Rate Classes and Programs

- Business Programs
 - Rebates on Energy Savings Programs
- Residential Programs
 - Rebates on EnergyStar Products, LEDs, Appliance Recycling, Lighting Kit Give-a-ways

2016

Experience. Delivery. Results.

 Franklin
Energy

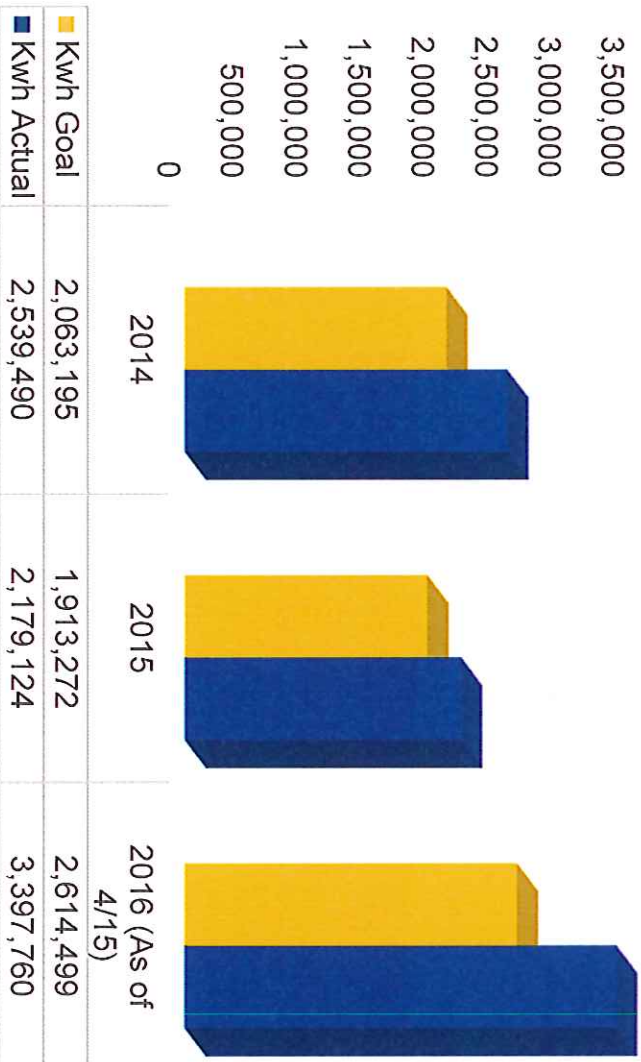


TRAVERSE CITY
LIGHT & POWER
Investing Our Energy In You

ENERGY SMART PROGRAM

TCLP Historic Performance

Commercial & Industrial



2016

Experience. Delivery. Results.



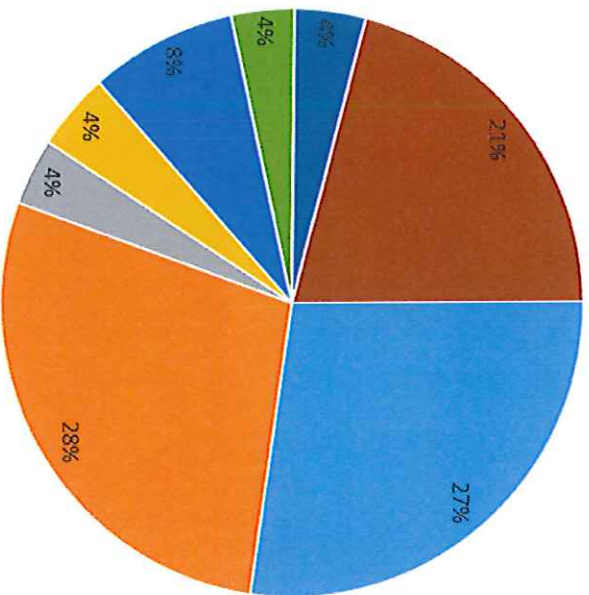


TRAVERSE CITY
LIGHT & POWER
Investing Our Energy In You

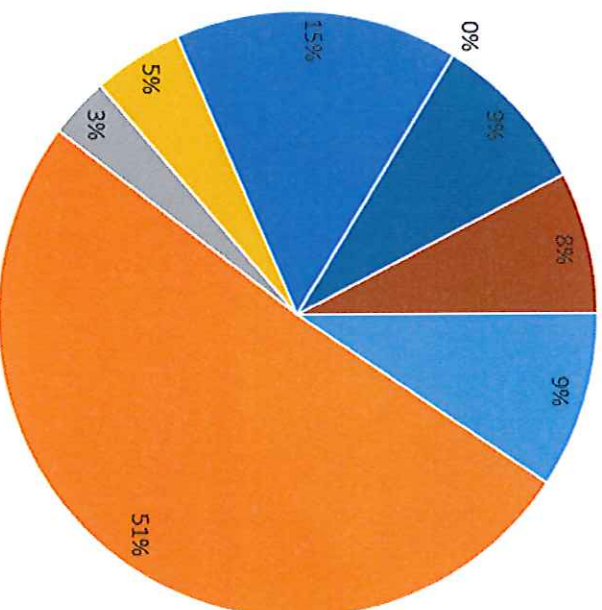
ENERGY SMART PROGRAM

Michigan Municipal Trends

2014



2015



- Lighting (non-LED)
- LED
- HVAC
- VFD
- Compressed Air
- Fork Lift Battery Chargers
- Anti-Sweat Heater Control/ECM
- Other

2016

Experience. Delivery. Results.





TRAVERSE CITY
LIGHT & POWER
Investing Our Energy In You

ENERGY  **SMART**
PROGRAM

- Application Process
 - Pre-Approval
 - Final Approval



2016

Experience. Delivery. Results.

Franklin
Energy

Process

- Identification of Rebate Project
- Contractor/Supplier Quotes Project to Customer
- Submit Application for Pre-Approval
 - Periodic Inspections, required for larger projects
- Submit Application for Payment Approval
 - Periodic Inspections, required for larger projects
- Final Approvals Through Program Manager
- Batch request is sent to TCLP to pay the customer

2016

Experience. Delivery. Results.



Franklin Energy Staff for TCI&P

Michael Reinhold Program Manager

Jennifer Alvarado Outreach Lead

Zack Heidemann Energy Engineer

Jacob Hardy Energy Advisor

Stephanie Bergen Project Coordinator

2016

Experience. Delivery. Results.





TRAVERSE CITY
LIGHT & POWER
Investing Our Energy In You

ENERGY  **SMART**
PROGRAM

Questions??

2016

Experience. Delivery. Results.

